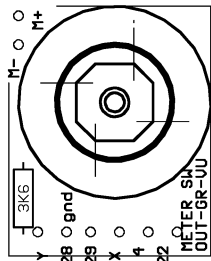
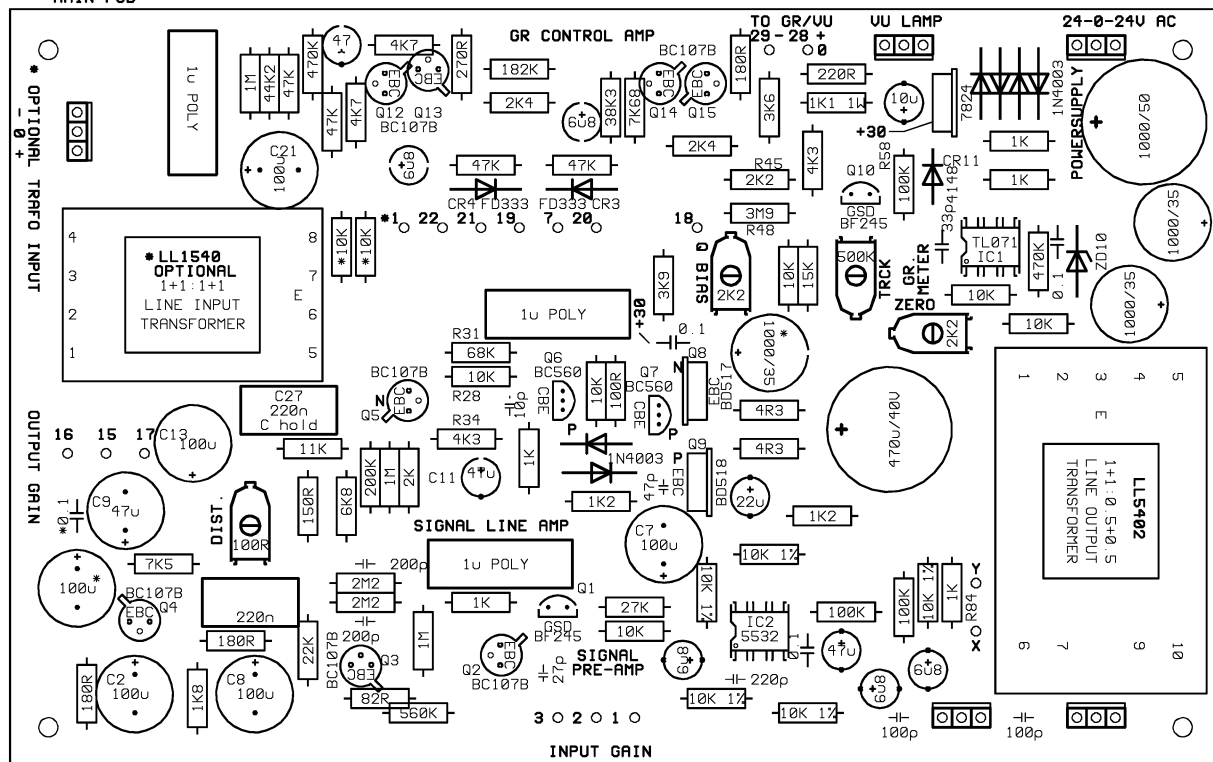


RATIO SWITCHING PCB
MAIN PCB THIS IS FROM COMPONENT MOUNTING SIDE



METER PCB 3-POS 4WAY SW.



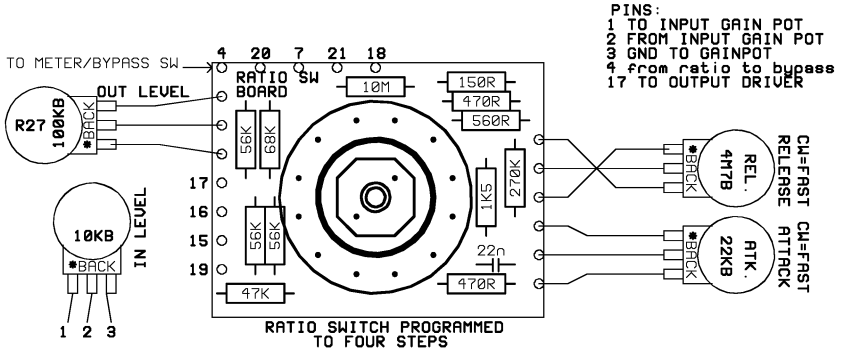
* OPTIONAL TRAFIO INPUT

OUTPUT GAIN

INPUT GAIN

BAL. INPUT BAL. OUTPUT

16
10 X 10



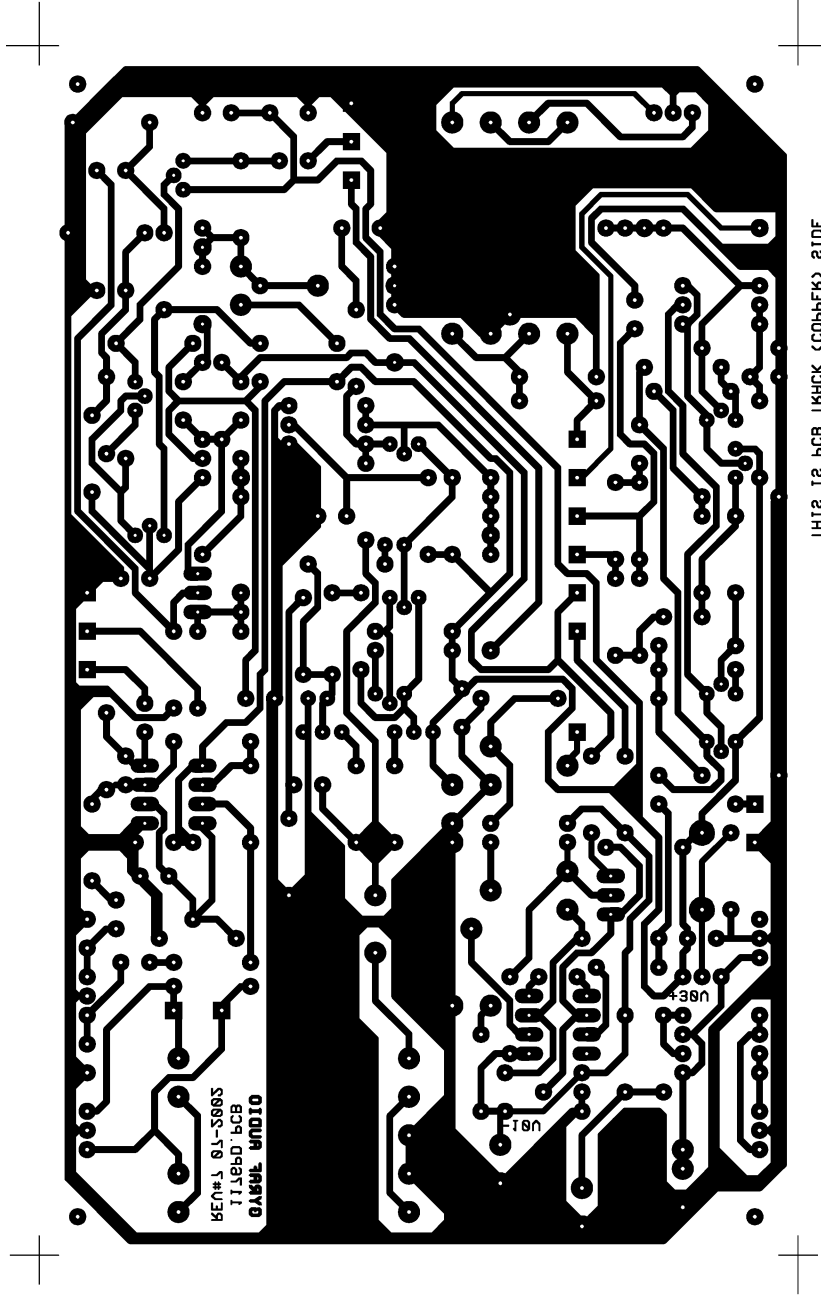
PINS:
1 TO INPUT GAIN POT
2 FROM INPUT GAIN POT
3 GND TO GAINPOT
4 from ratio to bypass
17 TO OUTPUT DRIVER

RATIO SWITCH PROGRAMMED TO FOUR STEPS

* = OPTIONAL
POTS: B MEANS "LOG", A MEANS "LIN"

GYRAF AUDIO	
Rev no# 7	Date 07-2002
Subject UREI 1176LN COMPRESSOR EUROPEAN TR'S/LUNDAHL TRAFIO	
Filename: 1176PD.PCB	
Edited	Date

- REV#4: GROUND PATH CHANGED
2N5457->BF245
- TRANSISTORS 2N6728->BD518
- SUBSTITUTED 2N6716->BD517
- 5117->BC107
- 2N3707->BC107
- REV#5: TRAFIO RECONNECTED
- REV#6: CORRECTED WRONG PINOUT ON
Q18 (BF245C METER)
- REV#7: BC107B'S MIRROR'ED
BD517 SHOWN WRONG WAY



THIS IS PCB BACK (COPPER) SIDE

